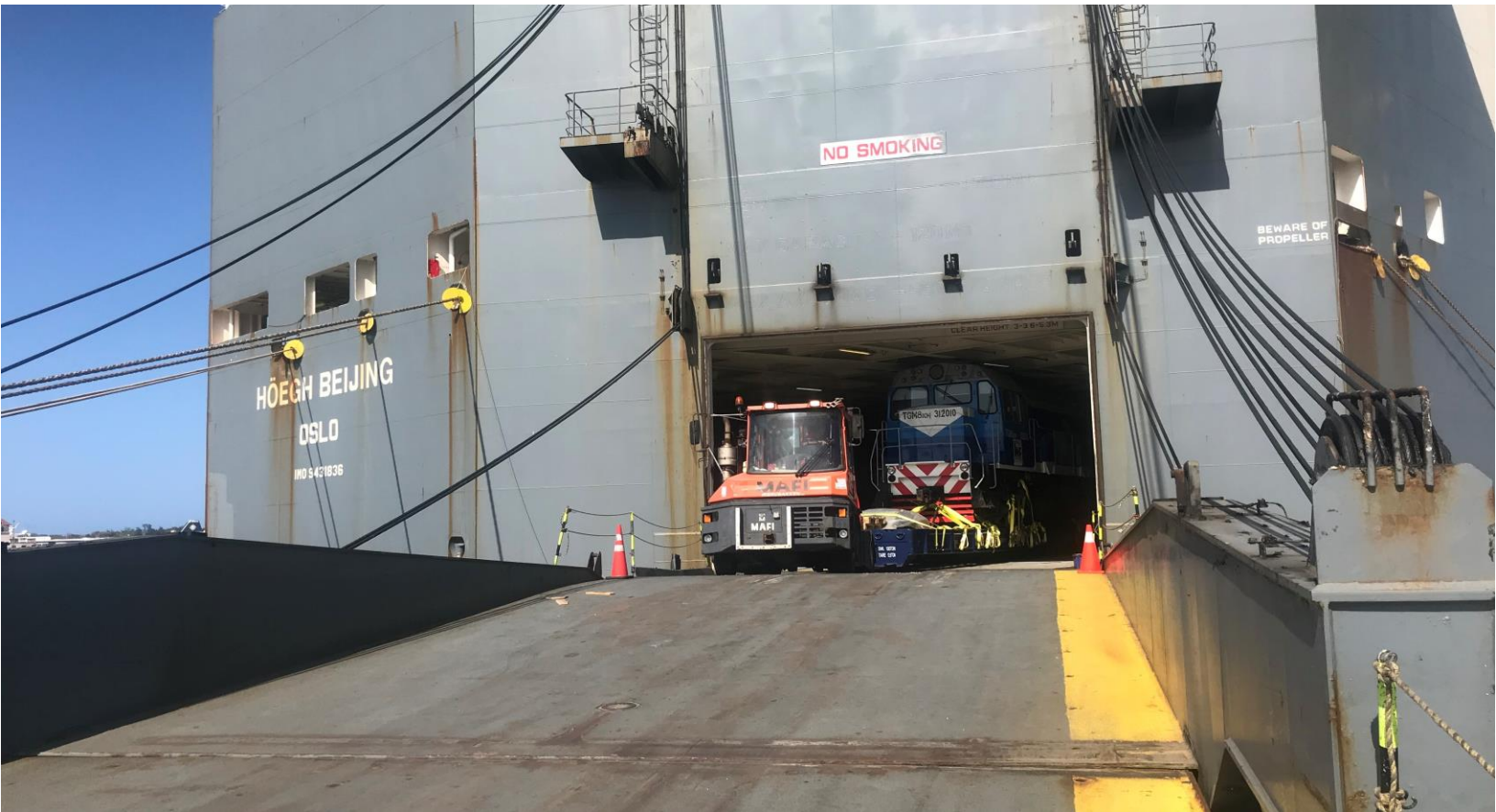




HÖEGH AUTOLINERS



East Coast of Mexico – 2018

Höegh Autoliners is one of the world's leading Ro/Ro operators, carrying close to two million standard car units annually worldwide. Höegh Autoliners has transportation contracts with many of the world's vehicle manufacturers and is in addition a leading carrier of second-hand vehicles as well as high and heavy construction equipment and other rolling stock. Our Pure Car/Truck Carrier (PCTC) service to and from East Coast of Mexico is operated by one of the most modern and flexible Ro/Ro fleets in the market.

East Coast of Mexico Service

Höegh Autoliners offers import and export possibilities via our regular ports on the East Coast of Mexico: Veracruz and Altamira. With growth in the area we have added connections to and from Latin American and Caribbean ports.

We offer a wide network of connections with around 100 ports linked with Veracruz and Altamira. We connect the East Coast of Mexico with USA, Latin America and Caribbean, Europe, Middle East, Africa, India, East Asia, Oceania and South East Asia. Höegh Autoliners offers around 12 sailings a month to and from Mexican Atlantic ports.

Höegh Autoliners Regionally

With over 90 years of shipping history, Höegh Autoliners is a pioneer in Ro/Ro transportation. Höegh Autoliners' activity in Mexico has been present for many years, but recently our presence on both the Atlantic and Pacific coast has increased significantly adding not only a number of port calls per month, but also new ports in Mexico and connection possibilities with other regions.

Höegh Autoliners is a well-established brand in the Americas, where we have been present for over 20 years. You will find our offices in Mexico City and Veracruz. In addition we are continuously developing and operate through an extensive and professional network of agents throughout the Americas.

Cargo

Höegh Autoliners has for many years built a strong relationship with leading car manufacturers and importers, for whom we ship new vehicles in different trade patterns worldwide. In addition to that, we focus strongly on the High and Heavy and Breakbulk segments, where our professional staff and modern vessels are ready to cater for a variety of cargo.

Our sophisticated Ro/Ro vessels offer up to 6.5 meters of free deck height and can cater for cargo weighing up to 375 tonnes. The vessels are able to handle a wide variety of rolling and non-rolling cargo. We operate on exclusivity a tug master with a 100 tonne capacity in Veracruz and 95 tonne capacity in Altamira for project cargo handling.

Environment

Our culture is recognized by a deeply held belief in the necessity of taking responsibility for the environment in which we operate. We not only comply with environmental regulations, but take a more active approach to find the most efficient solutions to further reduce our environmental footprint. Höegh Autoliners is 9001 certified and Höegh Wallem Ship Management, which manages all Höegh Autoliners' own vessels, is ISO 14001 certified.

IMPORT to East Coast of Mexico

Europe, Caribbean – load ports (EUCA):

- Antwerp, (Belgium) – (31/1)
- Bremerhaven, (Germany) – (29/2)
- Le Havre, (France) – (26/2)
- Santander, (Spain) – (23/1)
- Vigo, (Spain) – (23/1)
- Sagunto, (Spain) – (19/2)
- Tangier, (Morocco) – (17/2)
- Fort de France, (Martinique) – (8/2)
- Pointe à Pitre, (Guadeloupe) – (7/2)
- Cartagena, (Colombia) – (4/2)

Other precarriage ports (feeder/EUCA)

- Newcastle, (UK)
- St.Petersburg, (Russia)
- Ust-Luga, (Russia)
- Paldiski, (Estonia)
- Gdynia, (Poland)

Middle East, India, South Africa – load ports (MIAF):

- Jebel Ali, (UAE) – (58/2)
- Sharjah, (UAE) – (51/2)
- Pipavav, (India) – (53/2)
- Mumbai, (India) – (43/2)
- Ennore, (India) – (45/1)
- Maputo, (Mozambique) – (34/1)
- Durban, (RSA) – (31/2)
- Luanda, (Angola) – (24/1)
- Lagos, (Nigeria) – (20/1)
- Tema, (Ghana) – (18/1)
- Dakar, (Senegal) – (13/1)
- Kingston, (Jamaica) – (3/1)

Latin America, Caribbean – load ports (HASA):

- Kingston (1), (Jamaica) – (22/2)
- Cartagena (1), (Colombia) – (20/2)
- Santa Marta, (Colombia) – (19/2)
- San Juan, (Puerto Rico) – (15/1)
- Port Everglades, (USA) – (13/2)
- Nassau, (Bahamas) – (12/1)
- Kingston (2), (Jamaica) – (9/2)
- Port-au-Prince, (Haiti) – (6/1)
- Santo Domingo, (Dominican Rep.) – (8/2)
- Cartagena (2), (Colombia) – (4/2)
- Manzanillo, (Panama) – (3/2)

Precarriage via Kingston (CACA/HASA):

- Georgetown, (British Guyana) – (+24/1)
- Paramaribo, (Suriname) – (+23/1)
- Bridgetown, (Barbados) – (+21/1)
- Basseterre, (St.Kitts) – (+19/1)
- St. Johns, (US Virgin Islands) – (+17/1)
- Pointe à Pitre, (Guadeloupe) – (+16/1)
- Roseau, (Dominica) – (+15/1)
- Castries, (Saint Lucia) – (+14/1)
- St. Georges, (Grenada) – (+13/1)
- Degradés de Cannes, (French Guiana) – (+9/1)
- Port of Spain, (Trinidad & Tobago) – (+7/1)

Precarriage via Bremerhaven (EUME/EUCA)

- Gothenburg, (Sweden)

Precarriage via Tangier (EUAF/EUCA)

- Southampton, (UK)

Precarriage via Bremerhaven (FEEU/EUCA)

- Piraeus, (Greece)
- Livorno, (Italy)
- Barcelona, (Spain)

EXPORT from East Coast of Mexico

USA, Europe – discharge ports (USEU):

- Port Everglades, (USA) – (4/2)
- Jacksonville, (USA) – (6/2)
- Baltimore, (USA) – (9/2)
- Antwerp, (Belgium) – (20/1)
- Bremerhaven, (Germany) – (22/2)
- Le Havre, (France) – (25/2)
- Tangier, (Morocco) – (33/2)
- Vigo, (Spain)
- Sagunto, (Spain)

Oncarriage via Antwerp (USEU/feeder)

- Helsinki, (Finland) – (+4/2)

Oncarriage via Bremerhaven (USEU/feeder)

- Drammen, (Norway) – (+2/4)
- Gothenburg, (Sweden) – (+2/2)
- Hamburg, (Germany) – (+1/2)
- Hanko, (Finland) – (+5/2)
- Southampton, (UK) – (+4/2)
- Santander, (Spain) – (+6/2)
- St.Petersburg, (Russia) – (+7/4)
- Paldiski, (Estonia) – (+4/4)
- Gdynia, (Poland) – (+7/2)

Oncarriage via Le Havre (USEU/feeder)

- Newcastle, (UK) – (+5/4)

Oncarriage via Tangier (USEU/feeder)

- Barcelona, (Spain) – (+2/4)
- Derince, (Turkey) – (+7/4)
- Livorno, (Italy) – (+4/4)
- Piraeus, (Greece) – (+6/4)
- La Goulette, (Tunisia) – (+2/2)

Africa, Oceania, Australia – discharge ports Oncarriage

- Durban, (RSA) – (+17/3)
- Tamatave, (Madagascar) – (+23/1)
- Port Reunion, (Reunion) – (+25/2)
- Port Louis, (Mauritius) – (+26/1)
- Fremantle, (Australia) – (+31/3)
- Melbourne, (Australia) – (+37/4)
- Adelaide, (Australia) – (+37/4)
- Port Kemia, (Australia) – (+40/4)
- Brisbane, (Australia) – (+42/3)
- Auckland, (New Zealand) – (+40/2)
- Noumea, (New Caledonia) – (+44/1)

Mediterranean, Red Sea, Middle East, India,

- Far East – discharge ports (USME):
- Tangiers, (Morocco) – (16/2)
- Jeddah, (Saudi Arabia) – (28/3)
- Borusan, (Turkey) – (34/2)
- Beirut, (Lebanon) – (34/2)
- Jebel Ali (UAE) – (35/3)
- Dammam, (Saudi Arabia) – (35/3)
- Aqaba, (Jordan) – (36/2)
- Mumbai (India) – (37/2)
- Ennore (India) – (42/2)
- Sohar, (Oman) – (45/2)
- Hamad (Doha), (Qatar) – (49/2)
- Abu Dhabi, (UAE) – (49/2)
- Mina Salman, (Bahrain) – (49/2)
- Shuwaikh, (Kuwait) – (49/2)
- Singapore, (Singapore) – (55/2)

Middle East, East Africa – discharge ports

- Umm Qasr, (Iraq) – (+3/3)

Far East, South East Asia – discharge ports:

Oncarriage via Singapore (USME/feeder)

- Jakarta, (Indonesia) – (+4/4)
- Batangas, (Philippines) – (+8/2)
- Muara, (Brunei) – (+5/2)
- Laem Chabang, (Thailand) – (+2/4)
- Port Klang, (Malaysia) – (+3/4)
- Kuching, (Malaysia) – (+4/1)
- Kota Kinabalu, (Malaysia) – (+5/1)
- Chittagong, (Bangladesh) – (+21/1)
- Ho Chi Minh, (Vietnam) – (+7/1)
- Taichung, (Taiwan) – (+7/1)
- Hong-Kong, (China) – (+7/2)
- Shanghai, (China) – (+7/2)
- Masan, (Korea) – (+8/2)
- Kawasaki, (Japan) – (.../...)
- Kobe, (Japan) – (.../...)

USA/Canada – discharge ports:

- Freeport, (USA) – (2/2)
- Port Everglades, (USA) – (4/4)
- Jacksonville, (USA) – (6/2)
- Baltimore, (USA) – (7/2)
- Wilmington, (USA) – (8/2)
- Halifax, (Canada) – (19/2)

Latin America, Caribbean – discharge ports (HASA):

- Kingston (1), (Jamaica) – (7/2)
- Cartagena (1), (Colombia) – (9/2)
- Santa Marta, (Colombia) – (10/2)
- San Juan, (Puerto Rico) – (13/2)
- Port Everglades, (USA) – (15/2)
- Nassau, (Bahamas) – (17/2)
- Kingston (2), (Jamaica) – (19/2)
- Port-au-Prince, (Haiti) – (20/1)
- Santo Domingo, (Dominican Rep.) – (22/2)
- Cartagena (2), (Colombia) – (24/2)
- Manzanillo, (Panama) – (25/2)

Oncarriage via Kingston (HASA/CACA)

- Oranjestad, (Aruba) – (+3/1)
- Willemstad, (Curacao) – (+4/1)
- Port of Spain, (Trinidad & Tobago) – (+5/1)
- Georgetown, (British Guyana) – (+6/1)
- Paramaribo, (Suriname) – (+8/1)
- Bridgetown, (Barbados) – (+10/1)
- Basseterre, (St.Kitts) – (+12/1)
- St.Johns, (US Virgin Islands) – (+13/1)
- Pointe à Pitre, (Guadeloupe) – (+15/1)
- Roseau, (Dominica) – (+16/1)
- Castries, (Saint Lucia) – (+17/1)
- St.Georges, (Grenada) – (+18/1)
- Degradés de Cannes, (French Guiana) – (+22/1)
- Port of Spain, (Trinidad & Tobago) – (+24/1)

Please note that the ports listed above are only a selection of ports offered in Höegh Autoliners' network. To learn more, please contact your local Höegh Autoliners representative.



• Green coloured ports are Höegh's main transshipment hubs.

(Validity from March 2018)